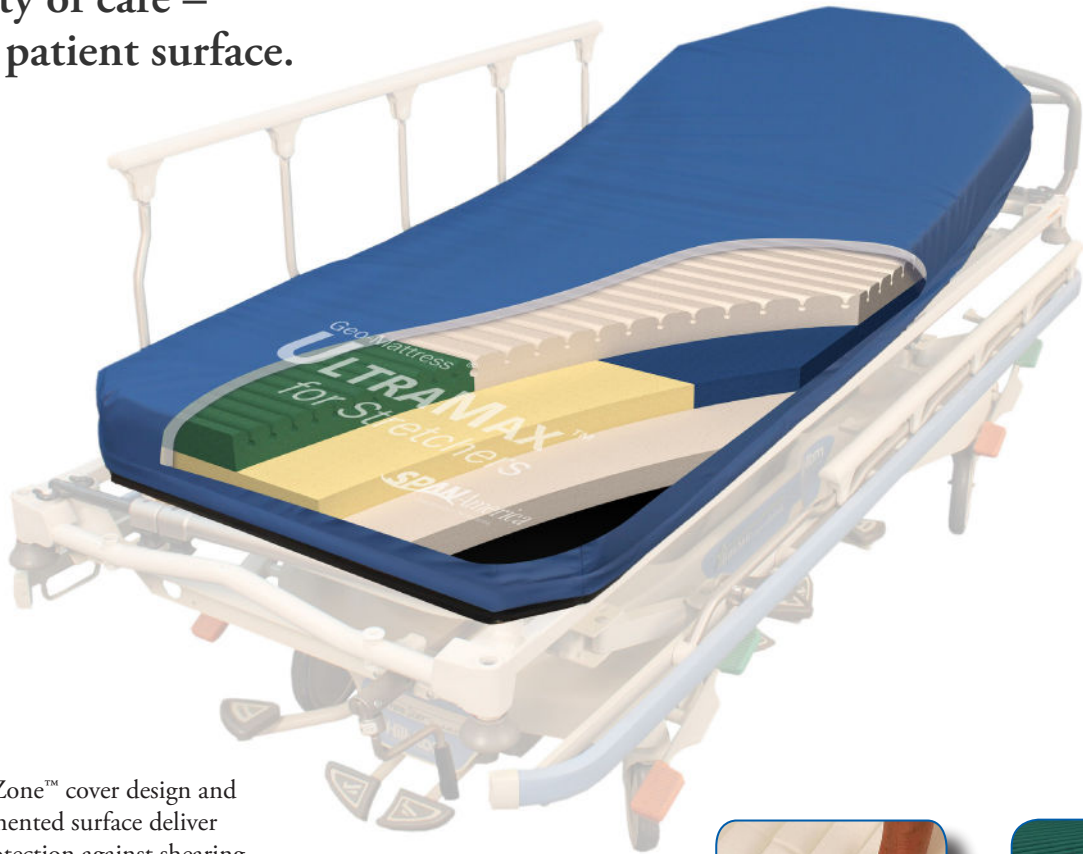


# Geo-Mattress<sup>®</sup> **UltraMax<sup>™</sup>** for Stretchers



Premium pressure redistribution support surface

A key to exceptional  
continuity of care –  
on *every* patient surface.



### **Ultra Effective**

Shear Transfer Zone<sup>™</sup> cover design and Geo-Matt<sup>®</sup> segmented surface deliver unsurpassed protection against shearing, pressure, and heat/moisture buildup.

### **Ultra Comfortable**

Precision engineered to help patients achieve a level of restful comfort typically possible only on full-sized hospital bed surfaces.

### **Ultra Resilient**

Exclusive UHP 500<sup>™</sup> core in seat section and 3-dimensional Zoning<sup>™</sup> design provide support and durability not achievable with traditional HR, latex, or viscoelastic foams.



**SPAN**America  
better science. better care.

# Geo-Mattress® UltraMax™ for Stretchers

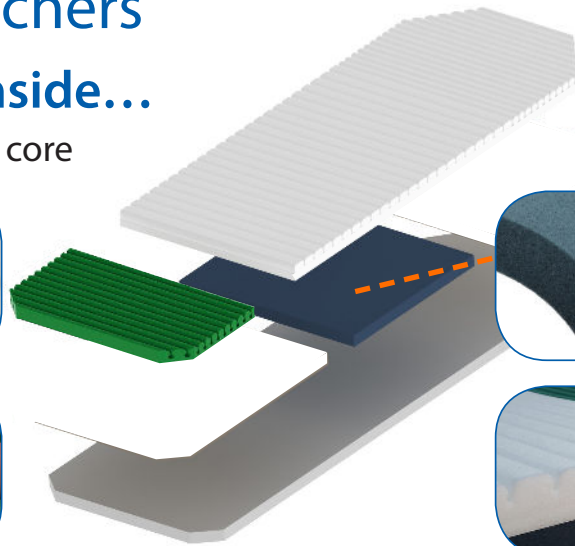
## Design Advantages Inside...

Engineered, multi-layer support core

**Geo-Matt® non-shearing surface** creates individually articulating cells; Ring-of-Air® channels dissipate heat and moisture.



**Extra-soft heel section** facilitates immersion to provide added heel protection.



**UHP 500™** Ultra High Performance foam in high-fatigue seat section; 55% higher support factor yields superior resiliency and recovery.

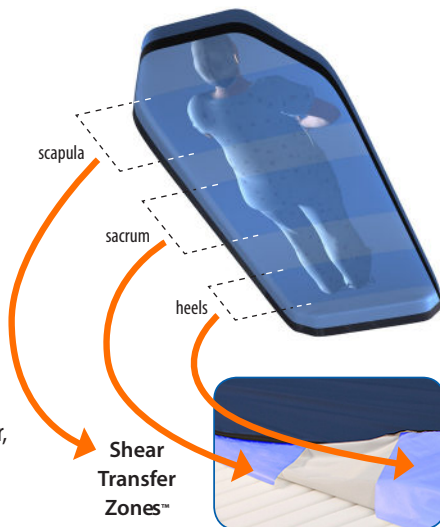


**3-Dimensional Zoning™** design provides anatomically-calibrated levels of support and immersion throughout.

## ...And Out!

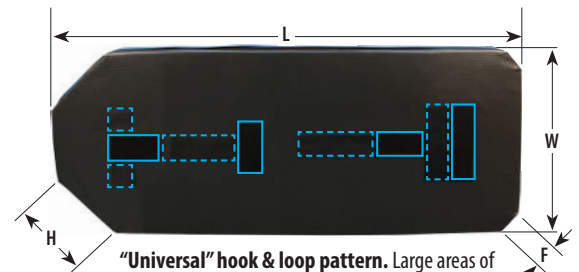
*Span-America Exclusive –*  
**Shear Transfer Zone™** cover design (pat. pending)

Silicone-coated, shear-minimizing fabric bands located on the cover's underside help prevent heels, sacrum, and scapula from "digging into" surface. Protect against damaging effects of micro shear, macro shear, and rotational (pivot-induced) shear.



**3-sided, flapped zipper** for infection control, ease of cleaning.

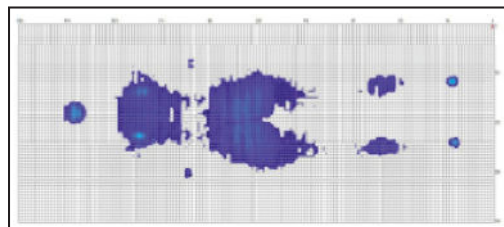
- Fluid resistant, antimicrobial, tear-resistant.
- Wipes clean with standard hospital-grade cleaners.



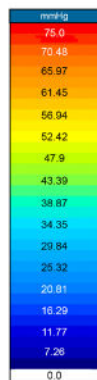
**"Universal" hook & loop pattern.** Large areas of both hook and loop on bottom of mattress help in anchoring it to a wide variety of stretcher models.

## Superior Pressure Management

Computerized imaging confirms outstanding redistribution of pressure across the surface and low overall peak pressures.



**Subject cited:** Female, 150 lbs., 5'8"  
**Average pressure:** 9.89 mmHg  
**Peak pressure:** 20.12 mmHg (sacrum)



NOTE: Pressure mapping results are representative only. Results will vary depending on a variety of factors including subject's position on surface, weight, body type, and position of frame.

## Specifications

[All models listed are 5" high to facilitate maximum immersion]

Item #	Dimensions, overall (L)length and (W)idth	(H)ead-end taper length	(F)oot-end taper length
47318	75"L x 26"W	7"	0"
49297	75"L x 26"W	13"	4"
97107	76"L x 26"W	10"	4"
10635	76"L x 26"W	12"	5"
2879529	76"L x 27"W	11"	5"
46234	76"L x 29"W	10"	8"
79012	76"L x 30"W	13"	4"
98969	78"L x 27"W	12"	12"
81921	2-pc "Gynie"	n/a	n/a

Other dimensions also available upon request.

- **Supports:** up to 700 lbs.
- **Warranty:** 3-year, non-prorated
- **Mattress Weight:** approx. 20 lbs.
- **All components:** 100% latex-free and 100% PBDE-free
- **Flammability:** Conforms to NFPA 101 (Life Safety Code™); CPSC 16 CFR Parts 1632 and 1633; Cal TB 117 & 129.

**SPAN**America  
better science. better care.