

**Savaria**  
Ceiling Lift  
Arm Extension

**OWNER'S  
MANUAL**

---



## IMPORTANT

Be sure to read this entire manual before using the arm extension. The information in this manual is important for the safety of the person being transferred and the operator, and for the proper use and maintenance of the arm extension. Transfer always presents a potential risk and this manual provides important safety information that must be read and understood to help prevent injuries.

Unauthorized modifications to this arm extension may affect its safety. Savaria Concord Lifts, Inc. will NOT be held responsible for any accidents, incidents or performance deficiencies that occur due to any unauthorized modification to this accessory. To avoid potential injury due to the use of inadequate parts, always use only Savaria replacement parts.

### NOTE

**If a serious incident occurs in relation to the device should be reported to the manufacturer or distributor of the device. In the European community, the incident shall be reported as well to the competent authority of the Member State in which the user and/or patient is established.**

### Legal Manufacturer:

Savaria Concord Lifts, Inc.  
2 Walker Drive  
Brampton, Ontario L6T 5E1  
Canada

### European Representative:

Advena Ltd.  
Tower Business Center,  
2nd Flr., Tower Street, Swatar,  
BKR 4013 Malta

### UK Authorized Representative:

Advena Ltd, Pure Offices, Plato Close,  
Warwick. CV34 6WE UK

Copyright © 2023  
Savaria Concord Lifts, Inc.  
All rights reserved.

---

## STANDARD NOTATIONS

The following notations may be used throughout this manual to emphasize important safety information, mechanical concerns, and other important information. Please review and follow all of these messages.



### **DANGER**

Danger messages indicate an imminently hazardous situation, which, if not avoided, results in death or serious injury. All danger messages feature a standard ISO safety alert symbol followed by the signal word **DANGER** in capitalized black lettering on a red background.



### **WARNING**

Warning messages indicate a potentially hazardous situation, which, if not avoided, could result in death or serious injury. All warning messages feature a standard ISO safety alert symbol followed by the signal word **WARNING** in capitalized black lettering on a dark yellow background.



### **CAUTION**

Caution messages indicate a potentially hazardous situation, which, if not avoided, could result in minor injuries. All caution messages feature a standard ISO safety alert symbol followed by the signal word **CAUTION** in capitalized black lettering on a yellow background.

---

### **NOTE**

Note messages provide information, such as reminders, general information about a previous statement, or additional guidelines that do not fit into the flow of the preceding text. All note messages include the signal word **NOTE** in capitalized white lettering on a blue background.

---

---

## CONTENTS

1. OVERVIEW .....	5
Intended Use .....	5
Product Life .....	5
Using This Manual .....	5
2. SAFETY INSTRUCTIONS .....	6
To Ensure Safety .....	6
3. DESCRIPTION .....	7
Symbols .....	8
4. SPECIFICATIONS .....	10
5. INITIAL INSTALLATION OF HOOK .....	12
6. USING THE ARM EXTENSION .....	14
Before Transfer .....	15
Transferring the Person .....	15
After Transferring .....	15
7. MAINTENANCE .....	16
Operator Maintenance Schedule .....	17
Inspection and Cleaning .....	17

---

# 1. OVERVIEW

## Intended Use

The arm extension accessory is designed for use by caregivers and health care professionals to help attach an unloaded hook and ceiling lift to the trolley in the track. Transfer must be performed by a qualified operator as described in this manual. **Do NOT use the arm extension for any other purpose.**

## Product Life

The arm extension is designed for a useful life of 10 years after which time it must be replaced. To ensure this life span, you must perform the preventive maintenance as specified in the *Maintenance* section in this manual.



### WARNING

**Savaria Concord Lifts, Inc. cannot ensure complete safety for an arm extension that has exceeded its useful life. Wear may cause failure of a part and lead to a patient fall.**

The expected life for other parts such as the lift, slings, straps, and cords is dependent upon the proper care and use of the individual items. The items must be maintained as described in their accompanying documentation.

## Using This Manual

To ensure safe operation of the arm extension, read this entire manual carefully, especially the *Safety Instructions*, before installing, using or maintaining this accessory. Failure to comply with all WARNINGS in this manual may result in injury. If there is anything you don't understand, contact your Authorized Savaria Dealer for further details.

Keep this manual with the arm extension and ensure all operators are fully trained in the use of this accessory as described in this manual.

## 2. SAFETY INSTRUCTIONS

Keep these *Safety Instructions* with the arm extension at all times. Read this entire manual before installing, using or maintaining this accessory.



### WARNING

**Do NOT use the arm extension for any purpose other than to help hook the unloaded motor unit to the trolley in the track. To ensure safety of the person being transferred and the operator, follow all Safety Instructions.**

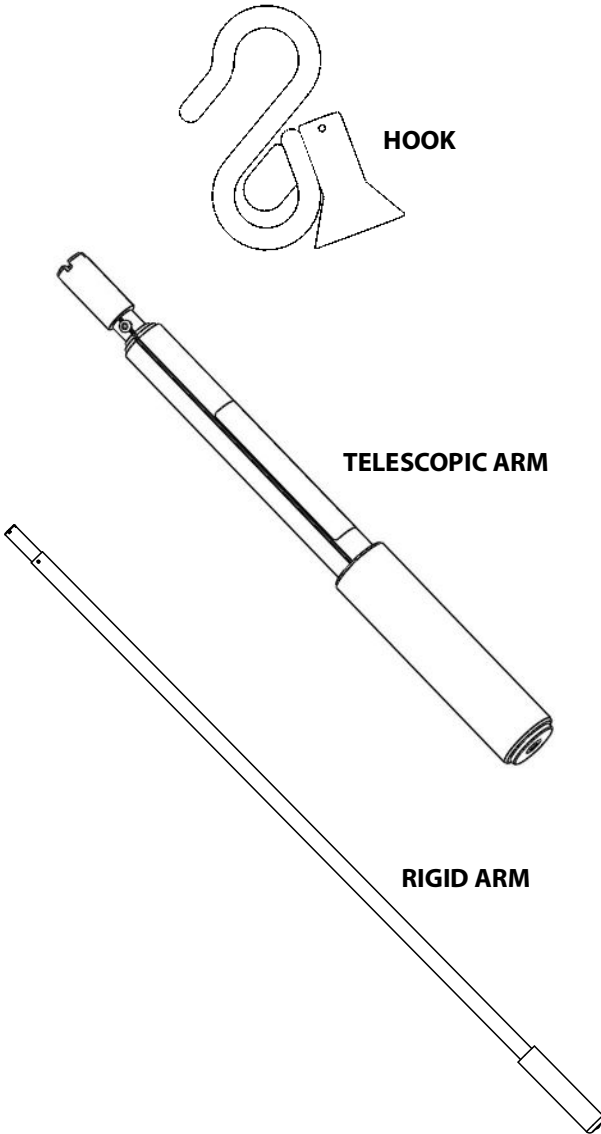
### To Ensure Safety

- The arm extension is designed to be used with a ceiling lift that has a safe working load of 200 kg (440 lb). Do NOT exceed this load. Refer to the nameplate tag for the Maximum Load allowed.
- Ensure the arm extension is used only with a Savaria ceiling track system. If the track system is not from Savaria, ensure the track system is properly assessed by a competent authority for fit, function, and safety.
- Operators must be fully trained before using the arm extension.
- Keep all components of the arm extension clean and dry.
- Ensure all checks and actions are performed at the frequency indicated in the *Maintenance* section in this manual.

---










### 3. DESCRIPTION

*Figure 1*






## Symbols

The following chart illustrates the symbols used on the nameplate, the packaging and the arm extension.

Symbols on nameplate	
	Indicates the product is a medical device according to EU Medical Device Regulation 2017/745.
 YYYY-MM-DD	Indicates the medical device manufacturer. This symbol is accompanied by the address of the manufacturer and the date of the manufacture. YYYY: Represents the year MM: Represents the month DD: Represents the day
	Indicates the authorized representative in the European Community. This symbol is accompanied by the address of the authorized representative.
	Indicates the manufacturer's catalogue number.
	Indicates the product complies with the medical device directive.
	Indicates the product complies with the directive.
	Indicates the manufacturer's batch number.
	Caution.
	Consult instructions for use.

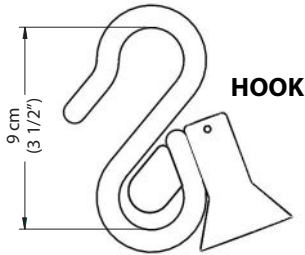


<b>MAX . LOAD :</b>	Refers to the greatest permissible load that can be applied to the accessory.
<b>Symbols on box label</b>	
	Indicates the temperature limits to which the medical device can be safely exposed.
	Indicates the range of humidity to which the medical device can be safely exposed.
	Indicates the range of atmospheric pressure to which the medical device can be safely exposed.

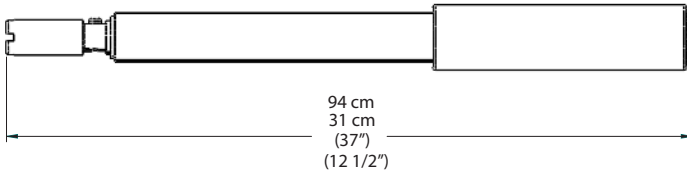
## 4. SPECIFICATIONS

Product	
Product Weight	Hook: 0.35 kg (12 oz.) Arm: 0.14 kg (5 oz.)
Product Life	10 years
Hook Safe Working Load (SWL)	200 kg (440 lb) + ceiling lift weight
Hook Height	9 cm (3 1/2") contact surface to contact surface
Arm Length	Minimum: 31 cm (12 1/2") Maximum: 94 cm (37")

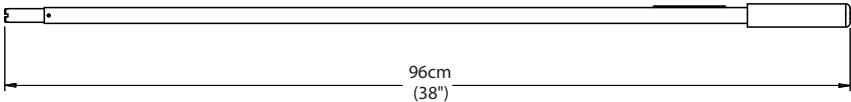
### Dimensions



#### TELESCOPIC ARM



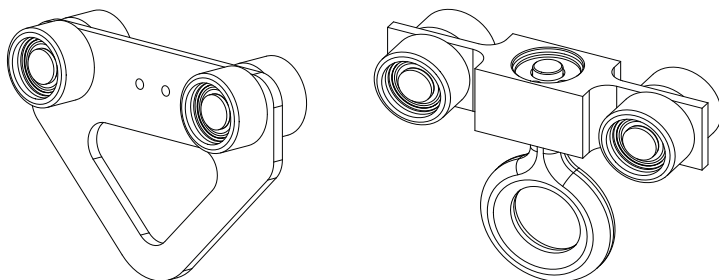
#### RIGID ARM



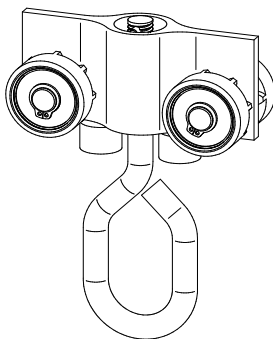
---

## Compatible Accessories

- Portable trolleys for Savaria track (standard), M920109 / (swivel), M920745



- Portable trolley for Handicare track(universal), 360655



---

## 5. INITIAL INSTALLATION OF THE HOOK



### WARNING

Read the *Safety Instructions* in this manual **BEFORE** using the arm extension.

**The arm extension must NEVER be operated by the person being transferred. In the unlikely case of failure, the patient could get stuck in the lift.**

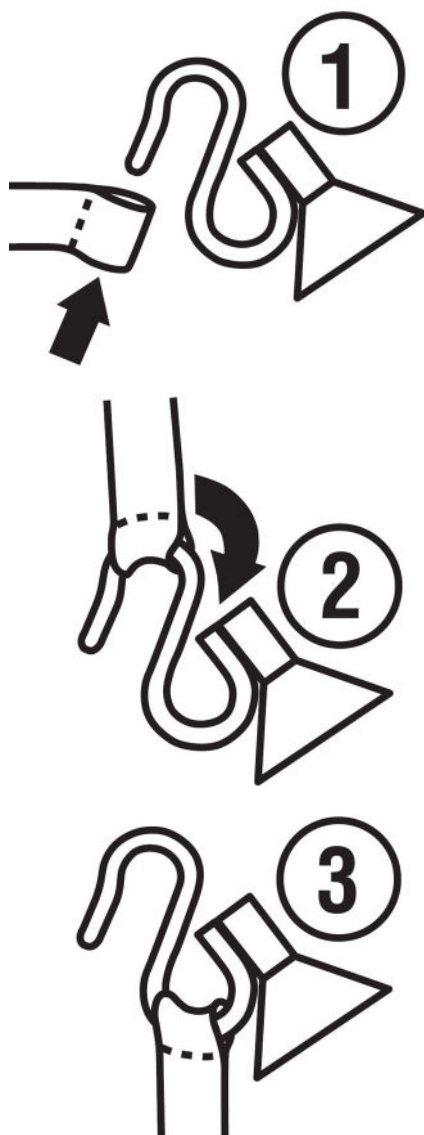
- 1 Remove the carabiner from the loop of the lift strap.

**Figure 2**



2 Install the loop of the lift strap onto the hook.

**Figure 3**

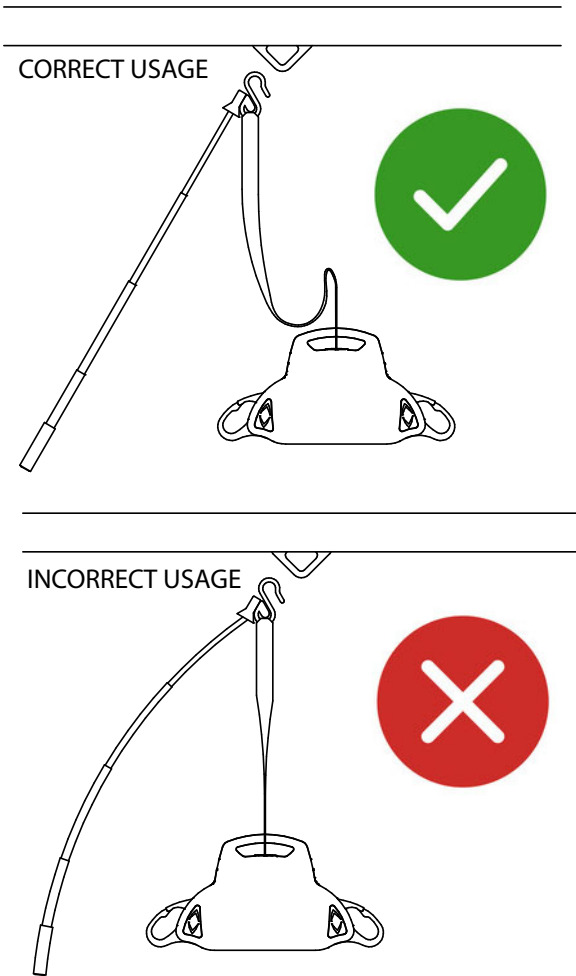


## 6. USING THE ARM EXTENSION



**Do NOT try to raise the weight of the lift with the arm. The lift may fall and cause injury to the person being lifted or another person.**

**Figure 4**



---

## Before Transfer

- 1 Ensure the lift battery is charged.
- 2 Ensure the track end stops are securely in place as shown below.

**Figure 5**



- 3 Take the telescopic arm in one hand, deploy and lock at the desired length.
- 4 Install the arm extension hook onto the trolley.
- 5 Remove the telescopic arm from the hook.
- 6 Always evaluate the person's general condition before transfer.
- 7 Ensure you have a sling that is the correct size for the person. Use only slings that are designed for use with the lift.

## Transferring the Person

- 1 Place the person to be transferred into the sling as described in the documentation provided with the sling or the ceiling lift.
- 2 Follow the operation instructions for the ceiling lift.

## After Transfer

- 1 Take the telescopic arm in one hand, deploy and lock at the desired length.
- 2 Lower the ceiling lift onto a surface or at a proper carry on height.
- 3 Grab the ceiling lift by the transport handle to release the tension in the strap.
- 4 Use the telescopic arm to remove the arm extension hook from the trolley.

## 7. MAINTENANCE

The arm extension is subject to wear and tear from use. You must perform the checks and actions in the following table to ensure safety and proper operation.



### **WARNING**

**Contact your Authorized Savaria Dealer to perform the Dealer Checks/Actions. Safety-related maintenance and service must be performed by an Authorized Savaria Dealer.**

**This maintenance schedules provides the minimum recommendations. In some cases, more frequent checks may be required per local regulations and codes.**

**To ensure safety of the person being transferred and the operator, do NOT use the equipment if a fault is found or if these regular checks have not been performed.**



## Operator Maintenance Schedule

Perform the following checks/actions as indicated. If any of the checks fail, contact your Authorized Savaria Dealer for service or replacement of parts.

Operator Check/Action	Frequency
Charge the hook for any signs of damage	Before every use
Check the lift strap for wear	Before every use
Check the support hooks, carabiner and lift strap for any damage	Every year
Check the track, hardware, and trolley wheels for damage	Every year



**To avoid potential injury, use only Savaria parts when replacing parts.**

**To prevent the person from falling (or objects from falling) that may cause injuries to the person, the operator or other persons, always reinstall the track end stops if they were removed for servicing. Note that the recommended tightening torque is 20 N-m (15 lb-ft).**

## Inspection and Cleaning

To clean the arm extension, wipe down the hook and arm with a damp cloth using warm water and a cleaner. You can also use wipes that have a 70% v/v solution of isopropyl alcohol.

Do not use phenol, chlorine or any other type of solvent that may damage the finish.

THIS PAGE WAS LEFT INTENTIONALLY BLANK

THIS PAGE WAS LEFT INTENTIONALLY BLANK

**Authorized Savaria Dealer**

# **Ceiling Lift Arm Extension OWNER'S MANUAL**

Part No. 001091-EN  
Rev. 007, 16-m11-2023  
© Copyright 2023

Savaria Concord Lifts, Inc.  
2 Walker Drive  
Brampton, Ontario, L6T 5E1, Canada  
[www.savaria.com](http://www.savaria.com)

For service or questions about this product, please contact your installing dealer.

DEALER NAME: \_\_\_\_\_

DEALER PHONE: \_\_\_\_\_

