

**Direct Healthcare
Group**

Advancing Movement & Health®

Bure Rise & Go DB

User Manual



Bure Rise & Go DB

The Bure Rise & Go is a conventional, electrically operated walker that is enhanced with a power rise function. Not only does it act as a walker, it also makes getting about in everyday life easier thanks to its smart power rise function.

The Bure Rise & Go can be used by anyone who regularly uses a walker. The user can remain active while the power rise function is in use.

The product consists of a walker and its associated harness and straps. The harness is available in different sizes (S, M, L, XL) and is split at the rear to make remaining in the harness possible while using the WC. The harness is secured to the two attachment straps (one each side), which are in turn attached to the walker.

When the patient stands up the electric power rise function is employed and the smart attachment reduces the distance between the patient and the walker until the patient is standing upright.

The walker can be used to advantage with a platform to facilitate patient transportation.

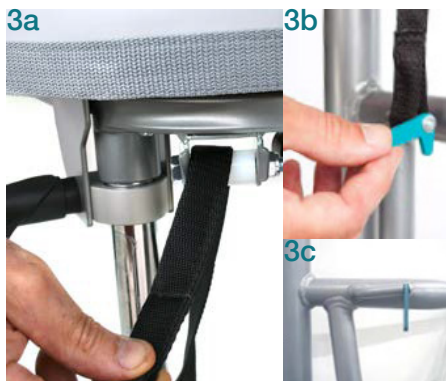
Contents

1. Standing up using the Bure Rise & Go	04
2. Raising/lowering the frame	06
3. Adjusting the handles	06
4. Left and right adjustment of armrests	06
5. Locking/unlocking castors	06
6. Adjusting the shin supports	06
7. Control box wiring	06
8. Battery charging	07
9. LED on controlbox and battery	07
10. Maintenance	08
11. General maintenance advice	09
12. Technical specifications	09

1. Standing up using the Bure Rise & Go

Because standing up or transporting patients always entails risks we recommend that two people are always present to assist the user at such times.

1. Fit the harness as low as possible across the hips and bottom with the broad upper part around the hips and the narrow lower part around the bottom. Attach the strap with the Velcro fastener and tighten it using the steplessly adjustable safety belt. Note that the lower part of the harness attached around the patient's bottom can be opened as required, e.g. for visits to the WC
2. Place the user's legs at a 90° angle with their feet on the floor or platform. Adjust the shin supports to fit the user's shins; remember to avoid pressure on the patellae and patellar tendons. Refer to page 5 for shin support adjustment
3. Thread both attachment belts through the walker's frame and the green locking devices. Make sure the belts are threaded completely through the locking devices. NB: Check especially that the belts are undamaged. Check that belts are not worn or frayed and that the holder and straps are NOT bent or crooked. If the holder and belts are crooked (pic 3c-red line) it is a sign that the product has been overloaded, in which case the frame must be replaced before further use.
4. Connect the power rise harness and attachment belts (that are secured to the walker) and tighten them using the loops; the belts must be taught on both sides (see fig. 4a).



Note: Slide the loop back once the straps have been tightened – this prevents tangling (see fig. 4b).

5. Swing the forearm supports to the side; the user must now grasp the handles WITHOUT support for the forearms.
6. Lock at least two of the walker's castors (any two) and fold down the stirrup.
7. Perform the standing manoeuvre and check that the harness pulls evenly on both sides; if not, adjust immediately. During the standing manoeuvre one carer must stand in front of the user while applying their weight to the stirrup and maintaining eye contact with the patient. The other carer may stand next to the patient.
8. In most cases the patient will not achieve a fully upright standing position; encourage the patient to achieve a final upright posture independently or assist the patient by tightening the adjustable harness straps.
9. Lower the walker to its individually adjusted height and swing the forearm supports back into position to provide support for the user. If a platform is not being used, swing the shin supports away for increased walking room: refer to page 5, Shin support adjustment. The harness may remain attached for enhanced safety, e.g. during transportation using the platform



2. Raising/lowering the frame

Adjust the height with the aid of the remote control <UP> and <DOWN> arrows.

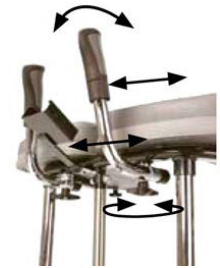


3. Adjusting the handles

To adjust handles to the desired position, undo knob, adjust handle tighten knob.

4. Left and right adjustment of armrests

The armrests can be adjusted sideways for optimal support: the whole arm can be moved in or out and locked with the knob.



5. Locking/unlocking castors

Depress the foot brake to set it and lock the castor. To unlock, press down on the protruding part of the brake.



6. Adjusting the shin supports

a - knob for height adjustment

b - knob for locking shin supports in forward position (when not in use).



7. Control box wiring

Remove the control box cover to make the connections as described below. Use a screwdriver or similar; refer to the special labels on the control box.

1. Socket for the raise/lower actuator. NOTE: Make sure that plugs are connected to the correct sockets otherwise the actuators can be damaged.
2. Remote control socket.
3. Battery terminal socket.
4. Plug socket. NOTE: Plugs must ALWAYS be connected to the control box for IP classification to be valid.



8. Battery charging

- Connect plug to 230V wall socket. Charging begins automatically and the battery LED flashes green.
- Make sure the battery is fully charged before using for the first time. It takes around 25 h to fully charge the battery.
- We recommend that the battery plug be removed from the control box if the product will be out of use for an extended period (more than one week) or if the battery is switched off by means of the ON/OFF switch. This eliminates the risk of disabling the battery as the control box always uses a small quantity of electricity even when the walker is not in use.

9. LED on controlbox and battery

Control box – green light when power is available from battery/mains socket.

Battery:

- The LED flashes green during charging.
- ON/OFF: To use the product, press ON.
- The green lamp will begin to flash.
- Use the OFF button (hold down for 5 s) to switch off the battery if the product will not be used for an extended period.
- The LED will show a constant green light when the battery is fully charged.
- When the battery is in normal state/in operation, the LED flashes green at REGULAR intervals, namely 0.5 s ON, 4 s OFF.
- When the battery requires charging (remaining charge <25%) the LED will flash orange/red at REGULAR intervals, namely 0.5 s ON, 4 s OFF.



NOTE: The battery has an in-built device that automatically switches it off when remaining charge is <20%. The LED is then extinguished. The battery must now be fully charged before the electronics can be used again.

10. Maintenance

Recommended at least once per year.

Check that	Action
<p>General</p> <p>The walker feels firm/free from play. The walker does not rattle during manoeuvres. The walker is level and all of its castors are in contact with the floor. The walker is not dirty.</p>	<p>Clean with lukewarm soap solution or alcohol-based cleaning agent (no petroleum products).</p>
<p>Arm rests</p> <p>Arm rests are intact and clean. Arm rest widening is functional.</p>	<p>Clean; replace if damaged. Replace lock knob</p>
<p>Handle</p> <p>Grips are not damaged/dirty. Handle adjustment is functional</p>	<p>Clean with lukewarm soap solution (no petroleum products). Replace handle grips. Fit lock knobs/plates as required.</p>
<p>Battery</p> <p>Check that the charging cable is connected to the control box. Check that the remote control is connected to the control box. Connect or fit new remote control as required. Check that the battery, actuators and control box are not loose.</p>	<p>Fit new cable; this must always be connected to the control box (IP65 classification). Connect; replace with new remote control as required. Refer to the wiring diagram in the Technical manual. Tighten; replace with new fasteners as required.</p>
<p>Height adjustment</p> <p>Raising and lowering are functional. The walker feels stable at maximum settings. There is no play between the vertical frame and bottom frame. Height adjustment clamps lock. The electric actuator fitting must be free from play. Height adjustment via remote control is functional. The electric actuator must run smoothly at a constant speed.</p>	<p>Fit new guide sleeves (in frame) or end plugs (in chrome tubes) as required. Tighten all lock bolts. Replace clamps. Tighten the attachment fitting concerned; replace bolts/lock nuts as necessary. Check that the battery/remote control/actuator are connected in accordance with the wiring diagram. Charge the battery. Contact customer services.</p>
<p>Frame parts</p> <p>There is no mechanical damage. There are no scratches. End plugs/lower frame fitted.</p>	<p>If damage is present, contact GATE's customer services. Touch up as necessary. Fit new end plugs.</p>

Castors/brakes

Castors roll easily/tread not damaged.
 The castors are tightly fastened to the lower frame.
 Castor brakes functional on all castors.
 Handbrake functional.

Clean or replace castors (NOTE! Castors are always fixed to the lower frame with thread locker or lock nuts. The castors are sealed and we do not recommend their dismantling; instead, replace the whole castor assembly.
 Tighten the castor bolt and fit locking nut or use thread locker (depends on model).
 Replace castor assembly.
 Adjust the brake or fit new castors.



Harness

Belts, seams and Velcro fasteners are whole/intact.
 The walker lockplate (green) is functional.

Replace harness. Available in three sizes (S, M, & L)
 Replace lockplate

Holder, belts

Holder, belts not bent (see Figure s3).
 Harness and attachment belts must be replaced every three years.

A bent holder is a sign that the product has been overloaded. The frame must be replaced before further use.
 The action is then "Check harness labeling. If the harness production date is older than 3 years, the harness and belts must be scrapped.

11. General maintenance advice

- Before use, check that the holder and belts are not bent (see Figure s3).
- Before use, check that the harness is not more than 3 years old (see labeling).
- Wipe the walker and its armrests clean as necessary; use soap solution/surface disinfectant.
- The product can be washed in washer/machine or similar since electronic components are sealed to IP65 classification. Please note that the product is not made out of stainless material – frequent use of water/ detergents may therefore shorten the life of the product.
- Replace damaged parts immediately; must be done by experienced personnel.
- The product is only intended for indoor use.

12. Technical specifications

Dimensions apply to walkers with 125 mm castors.

Part No.	Product width	Max user weight	Length	Height	Weight	Armrest/ Internal dimensions
56-309	66-106cm	150kg	101cm	95-135cm	40kg	34-65cm

Direct Healthcare Group

Advancing Movement & Health®

Direct Healthcare Group
Withey Court, Western Industrial Estate
Caerphilly
CF83 1BF

T: 0800 043 0881
F: 0845 459 9832
E: info@directhealthcaregroup.com

LIT-00127 Issue 1
Date: January 2020

DIRECTHEALTHCAREGROUP.COM