



Handicare Ceiling Lifts

Opening Your Home to You Again

Reliability and Value

A good lift does two things: goes up and goes down, safely and reliably. For more than a decade, the Handicare C-450 and P-440 lifts have established an industry-leading reputation for reliability. Reducing injuries for users and caregivers alike, they have safely moved thousands of loved ones in the home environment, at a price that has set the standard for value in the industry.



Making Everyday Life Easier



Age in Place: Live in the Home you Love

Why leave the home you've grown to love? With our ceiling lift solutions you can age in place in the comfort of your own home.

Our permanent ceiling lift installs can be designed so moving throughout your home becomes an effortless task while our portable solutions require no construction and can be taken anywhere.

Keeping Families Connected + Together

We know providing the best care to your family members is most important to you. Our ceiling lifts are designed with families in mind, and easy to use with safety features that protect the ones you love.

Spend more time together as a family and less time figuring out how to do it.



C-450 Ceiling Lift

The Dependable Choice for Moving Through Your Home Safely and Easily

For use in the home, the Handicare C-450 ceiling lift helps users regain freedom. Depending on his or her ability, the Handicare C-450 ceiling lift can be operated by the user or with a caregiver's assistance. Quiet and smooth, our C-450 is programmable, features a digital display and has a weight capacity of 450 lbs. Available with Constant Charge, Return to Charge and Power Traversing options, the Handicare C-450 ceiling lift can restore independence for users.





Versatile Lifting Options

The C-450 is a versatile fixed ceiling lift providing multiple lifting options for a safe and easy transfer. Paired with different Handicare slings, the C-Series can lift, transfer, position, turn, boost and even provide support to limbs for dressing changes.

Easy to Use Hand Control

Quiet and smooth, our compact C-450 ceiling lifts feature a pneumatic hand control that has no electrical components for additional safety. The large buttons make it easy to operate the lift and provides clear directional indicators.



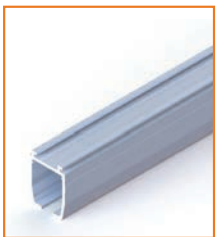
Ceiling Tracks

Create the Path to Where You Want to Go

The Handicare C-450 ceiling lift is used on customized, fixed ceiling track systems that transports a user from a bed or wheelchair to a bathroom, kitchen, living room or almost any location in the house. Handicare ceiling track rail is made from powder-coated aluminum. It's offered in straight and curved sections, and is available in five profiles to meet the needs of any installation. For greatest safety, professional installation by an authorized Handicare dealer is required for any ceiling lift track system.



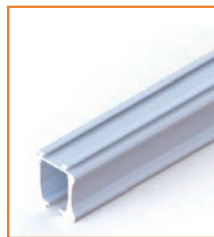
Track Options



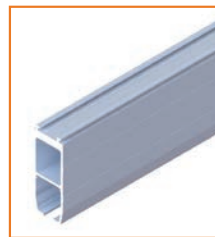
Regular Track
Standard rail for most applications.



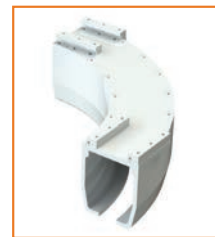
Flush Mount Track
For the lowest-profile installation.



Super Track
Heavier rail for longer free spans between attachment points.



TrackPlus
Our highest rigidity track for our longest free spans.



Quick Curve
The smallest curve in the market only offered by Handicare to address tight corners and obstacle avoidance with a 6.5 in (165 mm) radius.



Curved Track
With three angle options (22, 45 and 90 degrees), provides endless room layout options and is available in both standard and flush mount.

Slings

The Most Complete Sling Assortment Available

Handicare is your trusted slings provider. With over one million slings manufactured worldwide, we offer the most comprehensive line of shapes, sizes and materials that can be used with any ceiling lift.

From simple to the most complex transfers, Handicare slings are designed to aid caregivers and provides a solution for every type of transfer.



Specifications & Part Numbers



Ask your dealer about our complete assortment of slings that include:

Hammock, Hygiene, Positioning, Universal and Speciality Slings available in a wide variety of materials and sizes for both children, adults and bariatric patients.

Carry Bars

The Right Carry Bar for Every User

To use the Handicare C-450 ceiling lift, you need to utilize the proper carry bar for safe and comfortable lifting. Handicare offers a wide range of carry bars suited to most every situation, including: bars fitted with bull horn connectors or spring latch connectors; narrow bars for small users such as children up to wide bars for more weighty and pain-sensitive users.

Our Quick Release System (QRS), makes swapping carry bars a snap. Simply open the latch, rotate the hook and attach your desired carry bar.



Specifications & Part Numbers



Carry Bars - Spring Latch Connector:

with Strap

360987: 14.0 in (355 mm)

360986: 18.2 in (461 mm)

360985: 21.6 in (550 mm)

with Quick Release System (QRS)

360983: 14.0 in (355 mm)

360982: 18.2 in (461 mm)

360981: 21.6 in (550 mm)



Carry Bars - Bull Horn Connector:

with Strap

360937: 12.8 in (325 mm)

360936: 16.7 in (425 mm)

360935: 20.7 in (525 mm)

360934: 26.4 in (670 mm)

with Quick Release System (QRS)

360933: 12.8 in (325 mm)

360932: 16.7 in (425 mm)

360931: 20.7 in (525 mm)

360930: 26.4 in (670 mm)

Independent Lifter

Meet the Independent Lifter

For those with moderate to strong upper body function, Handicare also offers the Independent Lifter that puts users in control of their transfers and removes the need for a sling. The patient operates the controls and pilots their own transfers around the swimming pool, bathroom, bedroom or wherever. The Independent Lifter reduces risk to the caregiver and is ideal for homecare scenarios where the user prefers a safe, simple and self-reliant lifting experience.



Specifications & Part Numbers



Part Numbers

Small: 341600
Medium: 241610
Large: 341620

Dimensions (L x W x H)

23 x 20 (Adjustable) x 30 in
[584 x 508 (Adjustable) x 762 mm]

Safe Working Load (SWL)

440 lb (200 kg)

P-440 Ceiling Lift

For All the Capability of a Ceiling Lift System That You Can Take Anywhere

Lightweight and portable, the Handicare P-440 ceiling lift is easily removed from one track and installed to another, so you can quickly share a single lift unit in ceiling track systems in multiple rooms in your home or in freestanding track systems that can be used just about anywhere. The Handicare P-440 has a weight capacity of 440 lbs.





Easy to Carry only 10.5 lbs

The P-440 weighs only 10.5 lbs. Moving from room to room has never been easier with its unique ergonomic carry handle located on the top of the lift.

An integrated control panel is located on the front for easy accessibility. Here you can find buttons to raise and lower users, battery status indicators and the E-Down button for emergency lowering.

Easy to Use Built for Safety

Quiet and smooth, our portable P-440 ceiling lifts feature a pneumatic hand control that has no electrical components for additional safety. The large buttons make it easy to operate the lift and provide clear indicators for moving up and down.

Charge the P-440 using a standard plug and socket through the port on the front.



FST-300

Take Your Track Anywhere... Even on Vacation

Are you heading on vacation and need to bring along a lift? Or just want the flexibility to switch rooms at home? Handicare's FST-300 Freestanding track system is both lightweight and durable. For use with our reliable P-440 portable lift, the FST-300 is designed with both caregiver and user in mind. Ready out of the box for lifts up to 300 lbs, it can be moved and assembled by one person in minutes for easy set-up in any space.



Specifications & Part Numbers



Part Numbers

341400

Construction

Lightweight Aluminum

Dimensions (L x H)

96 x 90 in (up to)
[2438 x 2286 mm (up to)]

Safe Working Load (SWL)

300 lb (136 kg)

Unit Weight

45 lb (20 kg)

Castor

Place a Track in Any Space Without a Permanent Install

For any space where a permanent, fixed ceiling track installation isn't practical, the Handicare Castor lift stand creates a safe lifting solution. With a customized length and height easily adjusted to any of seven different levels, the Castor can perform the low or high lifts your specific circumstances require. And even when the stand can have only one leg on the floor—as when positioned for bathtub transfers—Castor is still your solution with the simple addition of a Handicare Wall mount kit to attach one end of its rail to a wall. The Handicare Castor has a weight capacity of up to 625 lbs.



Specifications & Part Numbers



Part Numbers

343100: 82 in (2082.8 mm) Regular Track
943102: 156 in (3962.4 mm) TrackPlus
343191: 197 in (5003.8 mm) TrackPlus

Dimensions (L x W x H)

47 x 82-197 x 79-96 in
(1194 x 2082.8-5003.8 x 2007-2438 mm)

Safe Working Load (SWL)

450 lb (204 kg) - 625 lb (283.5 kg)
Depending on track

Unit Weight

109-190 lb (50-86 kg)

Pressure Fit System

Designed to Fit **Any Space**

The Handicare Pressure Fit System can be assembled in minutes, making it a great choice for both temporary and permanent portable solutions. The Pressure Fit track exerts equal pressure between the floor and ceiling to stabilize the unit while ensuring ceilings aren't damaged. It also has a bath adapter that enables safe transfers into standard bathing systems. Available in two, three and four-post designs.



Specifications & Part Numbers



Part Numbers

2-Post: 341500

3-Post: 341505

4-Post: 341510

Ask your dealer for various packaged systems with trolleys.

Safe Working Load (SWL)

440 lb (200 kg)

Unit Height

Expands from 7' - 9'

C-450

Specifications

Motors

Lift Motor: 24 VDC
Power Traverse: 24 VDC (Opt)
X-Y Traverse: 24 VDC (Opt)

Safe Working Load (SWL)

C-450: 450 lb (204kg)

Dimensions (L x W x H)

C-450: 12.5 x 5.7 x 8.6 in
(317.5 x 144.8 x 218.4 mm)

Unit Weight

C-450: 22 lb (10 kg)

Lift Case

Flame Retardant ABS

Safety

Emergency Stop
Emergency Lowering Device
Emergency Manual Raising and Lowering

Standards

IEC 60601-1:2005/A1:2012
IEC 60601-1-6:2010/A1:2013
IEC 60601-1-11:2015
IEC 62366:2007/A1:2014
ISO 10535:2006
IEC 60601-1-2:2007
VL 60601-1:2003

Hand Control

C-450: Pneumatic

Service Life

10 Years or 22,500 cycles

Rated Performance

C-450: 50-60 lifts at Max Load

Batteries

AH, Sealed Lead Acid
24 VDC (2 x 12 VDC)
5.0 AH

Charger Model

Soneil, PS2403SRM30

Charger Input

100-240 VAC, 150-60 Hz 1.5A

Charge Output

24 VDC, 1.0 Amps

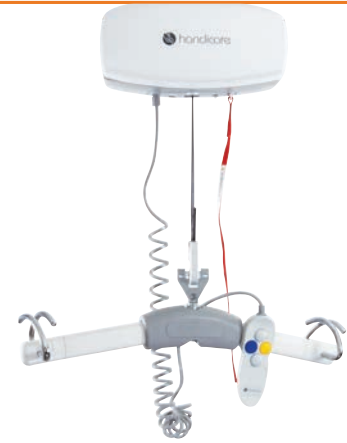
Lifting Range

Up to 96 in (2438.4 mm)

Duty Cycle

1 Min "On"
9 Mins "Off"

Part Numbers



C-450: Lift Up to 450 lb (200 kg)
323100: Manual Traverse
323150: Power Traverse
323149: Power Traverse w/ RTC
323177: Power XY



We're **Trusted**

Over **275,000** ceiling lift installations across North America

We're **Experts**

Handicare's nationwide, trained dealers handle the installation and provide **FREE on-site training.**

P-440

Specifications

Part Numbers

Motors

Lift Motor: 24 VDC

Safe Working Load (SWL)

P-440: 440 lb (200 kg)

Dimensions (L x W x H)

P-440: 18.8 x 7.4 x 6.4 in
(477.5 x 188 x 162.6 mm)

Unit Weight

P-440: 10.5 lb (4.8 kg)

Lift Case

Flame Retardant ABS

Safety

Emergency Stop

Emergency Lowering Device

Standards

IEC 60601-1:2005/A1:2012

IEC 60601-1-6:2010/A1:2013

IEC 60601-1-11:2015

IEC 62366:2007/A1:2014

ISO 10535:2006

Hand Control

P-440: Pneumatic

Service Life

7 Years or 22,500 Cycles

Rated Performance

P-440: 5-10 lifts at Max Load

Batteries

AH, Sealed Lead Acid

24 VDC (2 x 12 VDC)

2.3 AH

Charger Model

Soneil, 2403SRM10

Charger Input

100-240 VAC, 0.5 Amps,

50-60 Hz

Charge Output

24 VDC, 0.5 Amps

Lifting Range

Up to 79 in (2007 mm)

Duty Cycle

1 Min "On"

9 Mins "Off"



P-440: Lift Up to 440 lb (200 kg)

303070: Lift Only

303073: w/ Extended Hooks

303075: w/o Carabiner



Are you ready to put mobility back in your life?

Call 1-888-637-8155 or
visit www.handicareusa.com to get started!