

The **Commode Sling** is used for transferring a patient to and from the toilet/commode. Toileting of a patient using the commode sling requires a certain degree of physical and mental ability on the part of the resident. Caregivers should assess the physical and mental abilities of an individual prior to using the commode sling. Such factors may include, but are not limited to: proper trunk control, awareness, and ability to follow instructions. Sling is made of mesh and disposable material.

Features:

- 1,000 lbs weight capacity
- Made from rip stop polyester — if punctured or torn, it will not rip
- 4-point hook up — attaches to any 2 or 4-point hook and loop sling attachment system
- Antimicrobial Protection — inhibits growth of microbes such as bacteria, mold and mildew that can cause stains, odors, and product deterioration (Excludes disposables)




Sling Part Numbers:	Size/Strap Color	Mesh	Disposable	
	Small (Black)	●	400071	600071
	Medium (Blue)	●	400072	600072
	Large (Yellow)	●	400073	600073
	X-Large (White)	○	400074	600074

Recommended Sling Size:

Small	Medium	Large	X-Large
0-100 lbs.	100-210 lbs.	210-310 lbs.	310-450 lbs.


*Sizing chart is only a guide. Different patient body types including height and width can affect the fit of the sling. Caregiver must determine correct size for patients.

*Proper patient and risk assessment is always required when deciding which sling type and application is to be used. Always refer to your institutional policies and procedures to ensure appropriate techniques are being used.



Washing Instructions:

- Machine wash in soap solution
- Max washing temperature: 165° F
- Rinse thoroughly
- Do not bleach
- Do not dry clean



Drying Instructions:

- Hang or tumble dry
- Max drying temperature: 175° F
- Do not overload dryer
- Do not place with direct heat source in dryer

***WIPING:** Between uses, Accel® TB or similar products can be used to clean this product. Follow the manufacturer's guidelines when cleaning. When soiled, please follow the washing instructions.

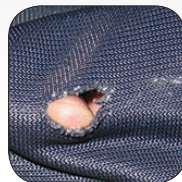
*Disposable slings are designed such that laundry is not required nor allowed. Therefore, the sling should be disposed of any time there is visible soiling of the sling and replaced with a new disposable sling.

Sling Inspection:



Use of Bleach

The use of bleach for cleaning any Medcare manufactured sling is not encouraged. Using bleach will reduce the "life" of the sling. Bleach is known to speed up fabric deterioration while causing fading and discoloration. If your facility is using bleach to launder slings it is imperative to inspect for premature wearing on a regular basis. This will ensure a safe transfer for the patient and caregiver.



Fraying

Any fraying of the material on the sling or belt is a clear indication that the fabric is in a weakened condition. Slings and belts with fraying should be removed from service immediately.

Rips or Burns in Material

Tears in fabric can spread and cause excess strain to be put on other areas of the sling. Slings and belts with rips, tears or burns should be removed from service immediately.

Time or Duration of Use

The longevity of a Medcare sling is determined by frequency of use and washes, washing and drying temperatures, detergent/disinfectants, patient weight, and incontinence. Average life expectancy of a sling ranges from 6 months to 3 years and is impacted by many variables.



Loose Stitching

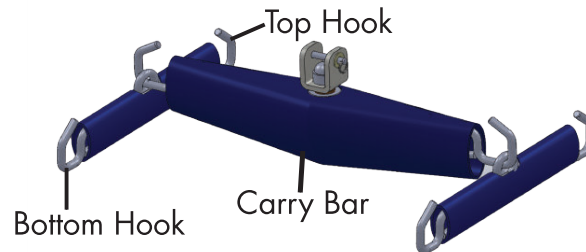
Any loose stitching on the sling, even if it is only supportive stitching, weakens that area and puts more strain on other areas of the sling.

Items which impact integrity of slings:

- Frequency of use
- Frequency of washes between use
- Washing temperature
- Drying temperature
- Detergents and disinfectants
- Amount of weight lifted
- Patient incontinence
- Age of sling

Patient Positioning in Sling:

Place SHOULDER STRAP on TOP HOOK.
Place LEG STRAP on BOTTOM HOOK.
These can work vice versa.



Using the Commode Sling: Seated Position



To position sling, gently lean patient/resident forward.

With sling positioning handles facing away, tuck the sling behind the patient/resident. Position the buckle at about the same height as the rib cage of the patient.



The sling should be positioned with buckle strap at same height as patient's/resident's rib cage, but should go underneath arm pit area.

Buckle strap across chest area, then firmly tighten. Ensure it is comfortable for patient/resident.



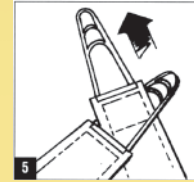
Position leg straps inside the arms of the chair.

Pull the leg straps of the sling toward you. Ensure no twisting has occurred.



Gently raise patient's/resident's thigh, pulling the leg straps underneath.

Repeat same procedure for other thigh.



Criss cross the leg straps as shown with one strap passing through the other.

Attach straps to adjacent sling support hooks.



Position carry bar so that it is parallel with the patient's/resident's shoulders.

Attach right shoulder strap to nearest sling support hook.

Repeat process for left shoulder strap.

Do not cross shoulder straps.

IMPORTANT: When lifting the patient, remain in position for easy access to belt strap. Torso elongates during lifting, leaving slack in the belt. Re-tighten belt to keep belt from sliding up on patient.

Only people who have received proper training should attempt to use Medicare Lift Systems. Improper use can lead to serious injury.

To ensure anyone using Medicare's Lift Systems is properly trained, an on-going training program should be established. Contact your Medicare Safe Patient Handling Consultant, or Medicare Technical Support at 1-800-695-4479 should you have further questions.

Please read and adhere to the following guidelines:

1. Read all lift instructions before using.
2. Do not exceed safe weight capacity.
3. Visually inspect the sling prior to using it (check for fraying, cuts, or tears to straps and/or material).
4. Position the sling, per the provided instructions, around the individual.
5. Do not use the lift systems for anything but their stated purpose.
6. All Medicare loop-style slings are compatible with Medicare and competitor's 2-, 4-, and 6-point carry bars.