



A-Series Ceiling Lift

Rise to the Next Level...

The A-Series Advantage

Built on the proven technology of the Handicare C-Series, the new A-450 and A-625 ceiling lifts raise patient handling to the next level. Increase patient protection with antimicrobial materials. Simplify patient transfers with its tilting design. Easily access real-time data and diagnostics.

Handicare's A-Series ceiling lifts give you the advantage in safe patient handling.



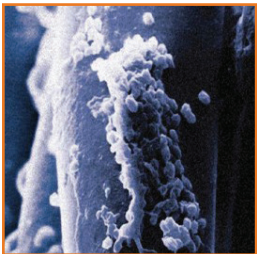
Antimicrobial Strap with Wear Indicator Marks

The **advantage** of reduced risk

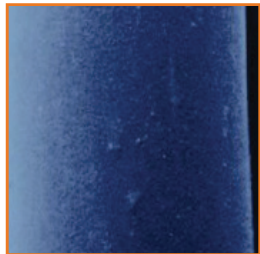
Active Shielding

In medical environments, microbes proliferate. Protecting patients from infection that can spread like wildfire is a challenge every healthcare facility faces. Handicare A-Series ceiling lifts provide you one more shield against infection for your patients.

Microbe Growth: Untreated Strap vs. A-Series Strap



Microbe growth on untreated strap fibers



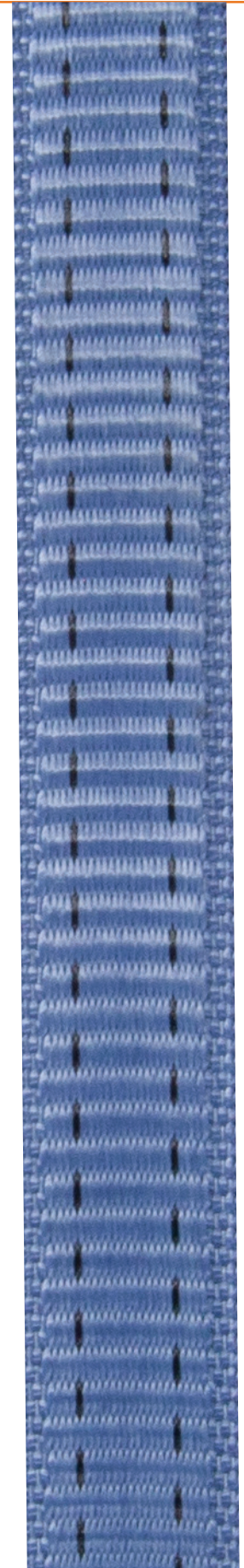
Growth on treated Handicare A-Series strap fibers

Easy Maintenance

Easy to clean and disinfect, A-Series lifts include a strap that has been treated with a specialized antimicrobial coating at the fiber level. The coating inhibits microorganisms' ability to grow on the surface of the material, thereby reducing the risk of infection while improving both safety and outcomes for patients.

Monitor Wear

Our lift strap also features wear indicator marks so you know when it needs to be replaced. And its reinforced edges protect against fraying and normal wear-and-tear to enhance the overall life of the strap.



Hand Control with Active Status Display

The **advantage** of real-time feedback

Intuitive Design

The A-Series hand control puts all lift data, diagnostic, and movement information right in the palm of your hand. The full color backlit display makes the hand control easy to read while waterproof technology protects the unit from outside moisture.



Three Operating Modes

More than just operating the lift, the A-Series hand controller helps you gather and record weight information for a patient while simultaneously collecting data on the lift's use and performance.

- 1 Control
- 2 Weighing
- 3 Data Collection

Retrofitting Simplified

The **advantage** of cost savings

Replace Aging Lifts Easily

The A-Series can be adapted and retrofitted onto any track system from all major ceiling lift manufacturers. Upgrading your lift motor to A-Series provides your caregivers with the next level in ceiling lift technology, a clear advantage over aging lift systems.

Our unique modular system simplifies the retrofitting process. Simply choose your Lift, Trolley, Carry Bar and Hand Control to complete your A-Series selection.



Multiple Charging Options Available

The Handicare A-Series ceiling lifts are available with Constant Charge and Return to Charge options. Constant Charge provides charging anywhere the lift is on the track while Return to Charge provides a designated area on the track for charging. You can even charge the lift through the hand control for added convenience.



Tilting Design with Quick Serviceability

The *advantage* of efficient positioning

Easy to Handle

Like parallel parking, going back-and-forth to position a lift in exactly the right spot directly over a patient can be time-consuming and tedious for both patient and caregiver.

The Handicare A-Series ceiling lift eliminates this difficulty. Able to tilt up to 15° degrees, it saves time and frustration during a transfer and gets the patient parked in the right place in the least amount of time. This also enables less strain on the lift strap as well as the caregiver.



15° Degree Tilt ●

Easy to Maintain

The A-Series ceiling lift can be taken off the track without removing end stops and end caps making servicing extremely easy. While simple fixes such as battery swaps can be done right on the track.



The Right Carry Bar for Every Transfer

The *advantage* of the right tool for the task

Multiple Sizes

The proper carry bar is essential to a safe and comfortable lifting experience. Handicare offers a wide range of carry bars suited to a variety of patients and situations. Fitted with bull horn or spring latch connectors, the A-Series carry bars come in various lengths to accommodate smaller patients such as children up to wide bars for bariatric and pain-sensitive patients.



Spring Latch Connector



Bull Horn Connector

Quick Release

With the Handicare Quick Release System (QRS), attaching or removing a carry bar from your ceiling lift is a snap—literally. Simply hold open the latch, rotate the hook, and attach or remove the desired carry bar. It's just that easy to get the right carry bar for any situation.



A-Series Specifications

Part Numbers

Motors

Lift Motor: 24 VDC
Power Traverse: 24 VDC (Opt)
X-Y Traverse: 24 VDC (Opt)

Safe Working Load (SWL)

A-450: 450 lb (204 kg)
A-625: 625 lb (284 kg)

Dimensions (L x W x H)

A-450 / A-625:
13.7 x 8.9 x 6.8 in
(347 x 227 x 172 mm)

Unit Weight

A-450: 21-23.5 lb (9.5-10.6 kg)
A-625: 21-23.5 lb (9.5-10.6 kg)

Lift Case

Flame Retardant ABS
with IPx22 rating

Safety

Emergency Stop
Emergency Lowering
Low Battery

Standards

IEC 60601-1:2005/A1:2012
IEC 60601-1-6:2010/A1:2013
IEC 60601-1-11:2015
IEC 62366:2007/A1:2014
ISO 10535:2006
IEC 60601-1-2:2014 (Ed 4.0)

Hand Control

Digital
IPx6 and IPx7 Rating

Service Life

10 years or 22,500 Cycles

Rated Performance

A-450: 50-60 lifts at Max Load
A-625: 30-40 lifts at Max Load

Maximum Sound Level

50 dB

Batteries

AH, Sealed Lead Acid
24 VDC (2 x 12 VDC)
5.0 AH

Charger Model

Soneil, PS2403SRM26

Charger Input

100-240 VAC 0.5 Amps, 50-60 Hz

Charge Output

24 VDC, 1.33 Amps

Lifting Range

Up to 96 in (2438 mm)

Duty Cycle

1 Min "On"
9 Mins "Off"



A-450: Lift Up to 450 lb (204 kg)

324200: Manual Traverse
324202: Manual Traverse w/ Load Cell and Wi-Fi
324204: Power Traverse w/ RTC
324206: Power Traverse w/ RTC, Load Cell and Wi-Fi

A-625: Lift Up to 625 lb (283 kg)

324201: Manual Traverse
324203: Manual Traverse w/ Load Cell and Wi-Fi
324205: Power Traverse w/ RTC
324207: Power Traverse w/ RTC, Load Cell and Wi-Fi

We're Trusted.

Over **275,000** ceiling lift installations across North America.

We're Experts.

Handicare handles the installation and provides **FREE on-site training** for your staff.



Are you ready to rise to the
next level in safe patient handling?

Call 1-888-637-8155 or visit www.handicareusa.com / handicare.ca

HANDICARE 10888 Metro Court, St. Louis, MO 63043

Toll Free: 866.891.6502 | Fax: 314.692.7858 | customerservice.northamerica@handicare.com | www.handicareusa.com